




# **Gro-Wall**<sup>®</sup>

Vertical Garden System

- 
- GRO-WALL<sup>®</sup> VERSION 4
  - GRO-WALL<sup>®</sup> PRO
  - GRO-WALL<sup>®</sup> FACADE



## Create Lush, Beautiful Vertical Gardens

Designed specifically for vertical garden enthusiasts, Gro-Wall® 4 includes many new intuitive and constructive features that benefit both users and designers. New features include a revolutionary watering system, improved wall anchoring and improved planting capabilities.

The Gro-Wall® 4 enables designers and users to install vertical gardens in adverse outdoor environmental conditions and in regulated

indoor environments with complete access and control. The new enhancements provide targeted watering control of individual plants, maximum water efficiency, last minute design changes and easy access to irrigation components.

*Gro-Wall® 4 is the perfect tool for creating vertical landscapes and the perfect companion for its' caretakers.*



*Atlantis vertical garden installation at the University of Lima, Peru.*



*Residential project in Sydney*



## Benefits:

- Rapid Construction
- Quick Plant Installation
- Vertical & Horizontal Expansion
- Optimum Moisture Retention for Plants
- Easy Individual Plant Access & Maintenance
- Easy Creative Planting Design
- Self Supporting Structure
- No Framework Required
- Structurally Strong
- Modular Planting System
- Excess Water Capture System Available



*U.A.E, an installation of 220m<sup>2</sup> of Green Wall into a school project. The Green Walls lower ambient temperature in the hot desert environment.*



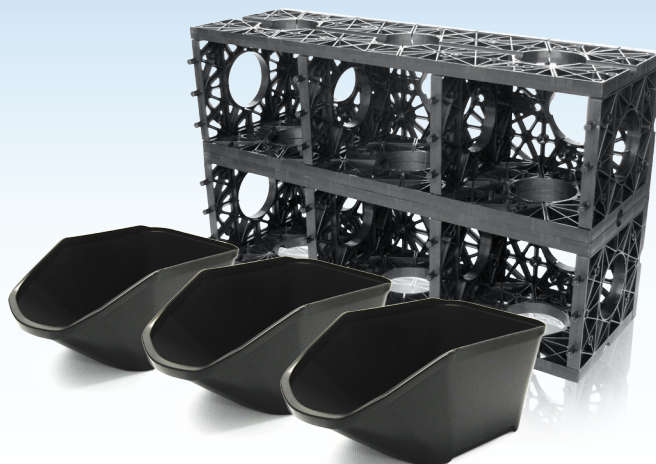
*Atlantis green wall installation, Bauhaus Mall, Turkey*



## Versatile Planting

### Gro-Wall® 4

Gro-Wall® features Gro-Pot™ planter trays that can accommodate single or multiple plants including small plants and grasses. Each Gro-Pot™ tray has built in drainage and a small water reservoir. The Gro-Pot™ can hold up to 6.5L of soil media and is compatible with all versions of Gro-Wall® including the PRO version.



## Why Use Gro-Wall®



**Water Efficient**  
Gro-Wall® is highly water efficient. The system can be tailored to water plants without excess runoff.



**Earn LEED Points**  
Use Gro-Wall® to earn up to 23 valuable LEED points on your project.



**IPI™ System**  
Gro-Wall® features individual plant irrigation system.



**Thermal Insulator**  
Gro-Wall® performs as a thermal insulator for buildings, cooling in summer and retaining heat in winter.



**Recycled Materials**  
Gro-Wall® is made from high quality recycled materials.



**IFS™ System**  
Integrated frame work system. Gro-Wall® is fixed directly onto the wall. No additional framework is required.



**Energy Savings**  
Save energy costs associated with running costly air conditioning.



**Green Building**  
The Gro-Wall® system is ideal for improving the GREEN ratings of building design and long term sustainability.



**Complete Access**  
Gro-Wall® allows complete & easy access to individual plants and irrigation components.



**Sound Insulation**  
The Gro-Wall® 4 design is a highly effective sound insulator holding up to 140L of soil media per square metre.



**Modular System**  
Gro-Wall® is a modular system allowing easy vertical and horizontal expansion.



**Versatile Planting**  
Gro-Wall® 4 can accommodate a large variety of plant species including grasses, Sedums, Succulents.

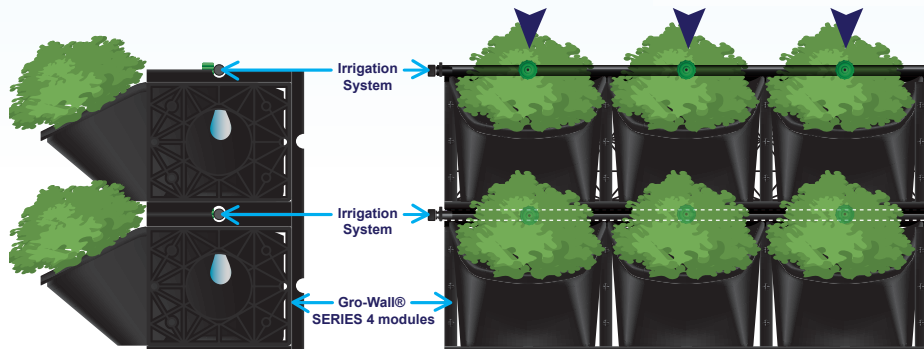


## Versatile Irrigation

Gro-Wall® 4 features IPI™ individual plant irrigation system that allows conventional drip emitter and irrigation conduits to be installed within the Gro-Wall® framework. Each plant cell is irrigated directly via a drip emitter.

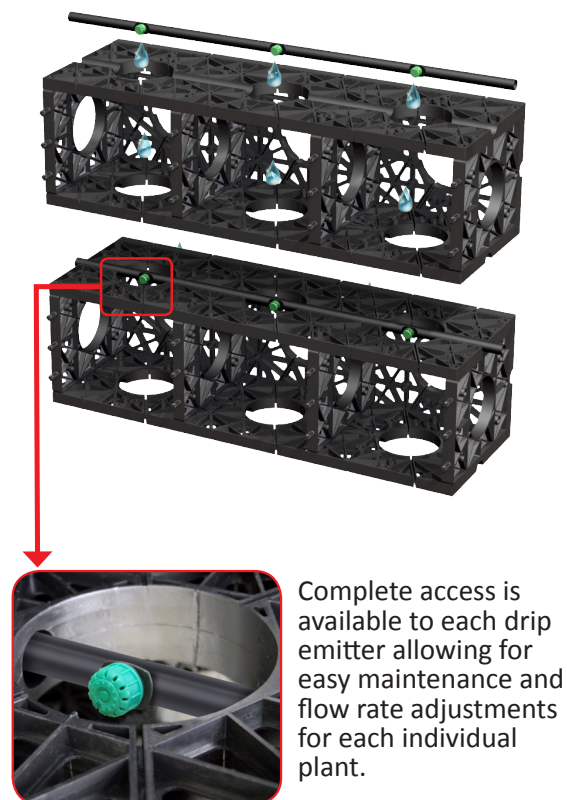
### IPI™ Individual Plant Irrigation

The IPI™ system conceals irrigation lines and drip emitters flush within the Gro-Wall® structure.



Each drip emitter is installed over each plant.

### Conventional Irrigation Setup Gro-Wall® 4



### Gro-Pipe® Irrigation Setup



Gro-Pipe® comes included in our Gro-Wall® 9 Pot Kit. Please refer to the Installation Manual for more information.



4 mm (0.16") Gro-Pipe®

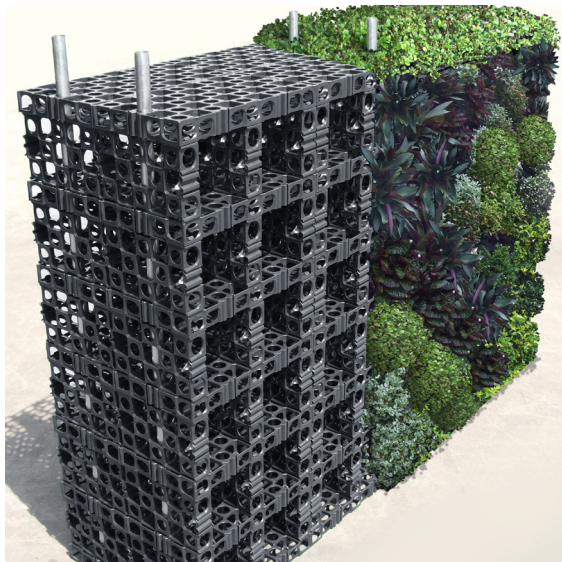
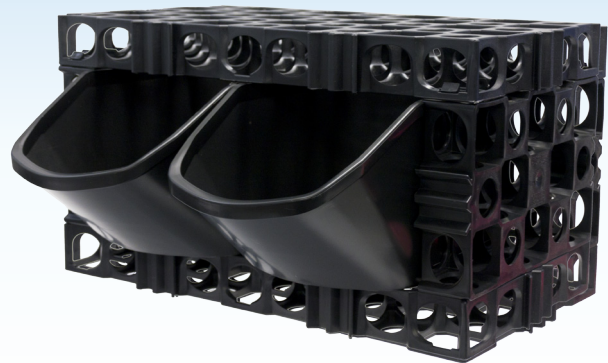


The versatile living wall.

## Gro-Wall® PRO

Gro-Wall® PRO is a versatile living wall system designed to construct robust living walls such as double sided landscaped walls, cascading living walls and living walls requiring intensive soil depth.

Gro-Wall® PRO features channel conduits for steel reinforcement and the housing of irrigation systems. The channels can be used for multiple drip line or drip head irrigation systems for intensive watering applications. Gro-Wall® PRO also features a rigid wall mount clip for fixing to wall surface.



Create double sided living walls



Create cascading living walls



New Delhi, INDIA, an installation of 148m<sup>2</sup> of Green Wall at a height of 13meters. The project utilises 1040 Gro-Wall® modules and 3120 plants.



An installer assembling a Gro-Wall® PRO

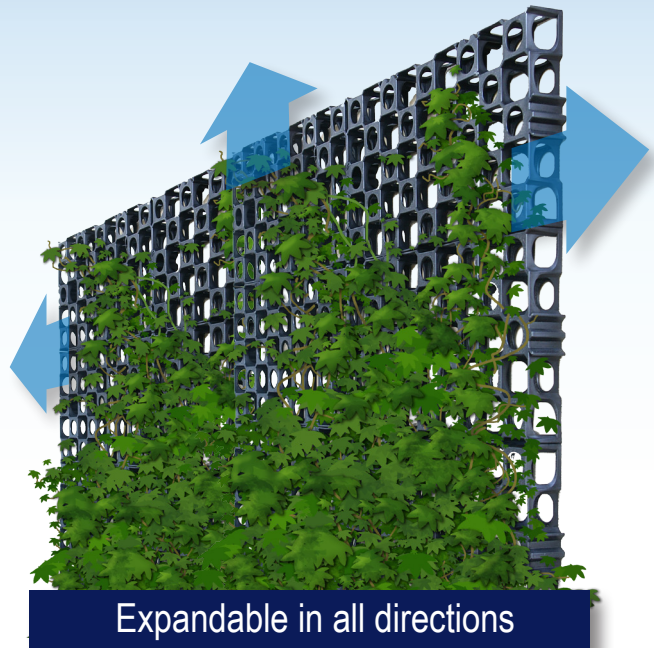


Create beautiful dense vegetated façades.

## Gro-Wall® Façade

The Gro-Wall® Façade system facilitates easy installation and integration with existing buildings and new architectural designs.

The strong design and ease of installation makes Gro-Wall® Façade an ideal choice for architects, landscape designers and landscape contractors.



**Gro-Wall® Façade**  
VERTICAL GARDEN SYSTEM

Ferry Road Market Southport, Queensland, Australia



# Easy Access

Gro-Wall® permits easy and complete access to both plants and irrigation components. This feature enables easy design changes and maintenance.

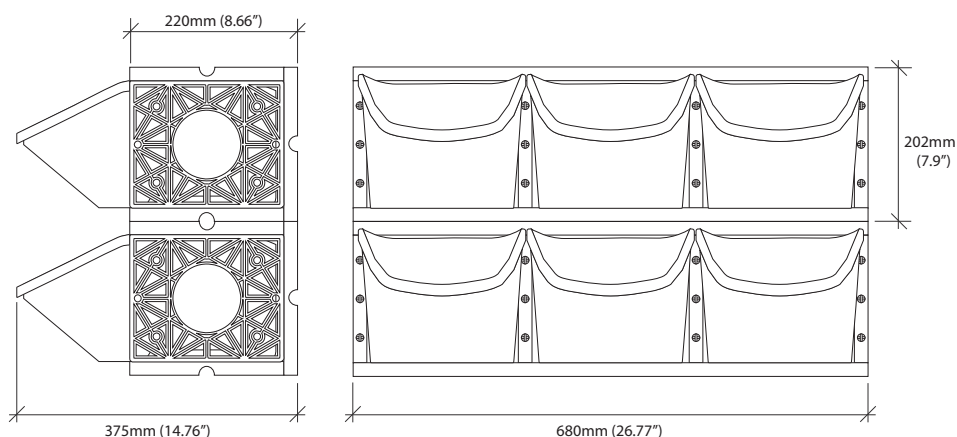
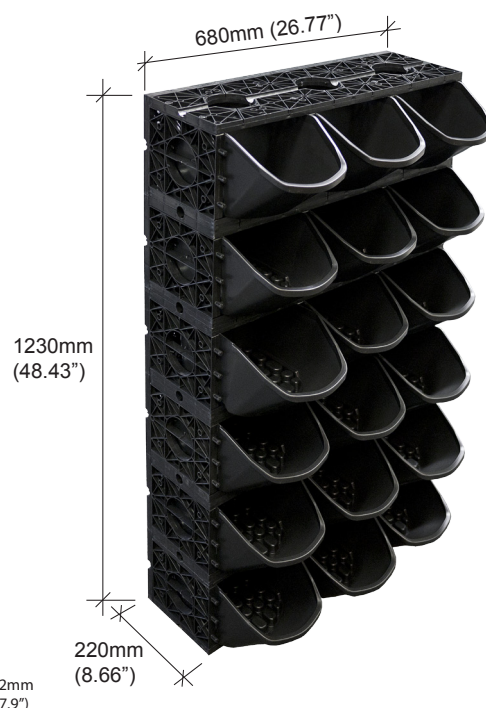
Removal of individual plants and access to the irrigation components can be achieved in seconds.



# Technical Data

## Gro-Wall® 4 Specifications

Part Number	80040
Material	100% Recycled Polypropylene
Colour	Black
Weight (Module Only)	2.04kg (4 lbs 8oz)
Overall Weight (Module & Gro-Pot™)	3.21kg (7 lbs 1.2oz)
Width	680mm (26.77")
Height	200mm (7.87")
Depth (Module Only)	220mm (8.66")
Overall Depth (Including Gro-Pot™)	375mm (14.76")
Maximum Loading	50kg (110 lbs 3.7oz) per module
Biological Resistance	Not affected by biological activity.
Recommended Service Temperature	-10°C to 80°C (14 °F to 176 °F)



**Atlantis Water Management**

PHONE: + 612 9417 8344

FAX: + 612 9417 8311

EMAIL: [info@atlantiscorp.com.au](mailto:info@atlantiscorp.com.au)

WEB: [www.atlantiscorp.com.au](http://www.atlantiscorp.com.au)

**Note:** Atlantis® products are manufactured from high quality recycled materials, carefully selected and under strict quality control procedures. The strength could vary slightly due to raw material, country of manufacture, manufacturing process and external conditions. **All trademarks are the property of Atlantis Water Management Australia.**

**Disclaimer:** All information provided in this publication is correct to the best knowledge of the company and is given out in good faith. This information is intended only as a general guide, no responsibility can be accepted for any errors, omissions or incorrect assumption. As each project is unique, and as Rebirth Pty Ltd, Atlantis Water Management, Atlantis Corporation Pty Ltd and its distributors and agents world wide have no direct control over the methods employed by the user in specifying, installing or supervising of its products hence no responsibility is accepted by Rebirth Pty Ltd, Atlantis Water Management, Atlantis Corporation Pty Ltd and its distributors and agents world wide. Users should satisfy themselves as to the suitability of the product for their purpose.

All product designs, and specification are subject to change without further notice. All Atlantis® products are tested in approved laboratories, and safe allowed tolerances should be practised in the actual field, to compensate for any unforeseen situations, on site and on products.

All material contained within this brochure is subject to copyright, and belongs to Atlantis Corporation Pty Ltd. No part of this brochure may be reproduced or transmitted in any form or by any means, electronic, mechanical, photocopying, recording or otherwise, without prior written permission of Atlantis Water Management, Atlantis Corporation Pty Ltd. Copyright © 2013